

Volume: 0.5 ml

Lot #: F11286A

**BioScout™ FITC-Sheep Anti-Rat Glomerular Basement Membrane (GBM)**  
*For Fluorescence Reference of GBM in Multi-Label Microscopy*

**Catalog number:** (BS-001GBM)

**Concentration:** 2 mg/ml

**Host:** Sheep

**Description of Product:**

FITC-Sheep IgG fraction targeted to purified rat glomerular basement membrane. F/P ratio: 4-6.

Works with mouse, rat, rabbit, bovine, and human tissues.

**Diluent:** 0.02 M phosphate buffered saline (PBS), pH 7.3. Contains 1mg/ml bovine serum albumin and 2 mM sodium azide as preservatives. Non-hazardous. No MSDS required.

**Storage:** Short term: up to 1 month: 4 °C; long term: up to 1 year: -20 °C or below. Avoid repeated freeze-thaw.

**Dilutions:** 1:30 to 1:50 for routine epi-fluorescence microscopy. 1:100 for confocal microscopy.

**Recommended Directions for Multi-Label Staining:**

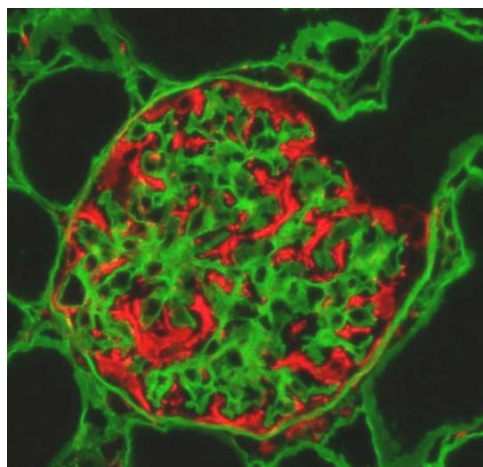
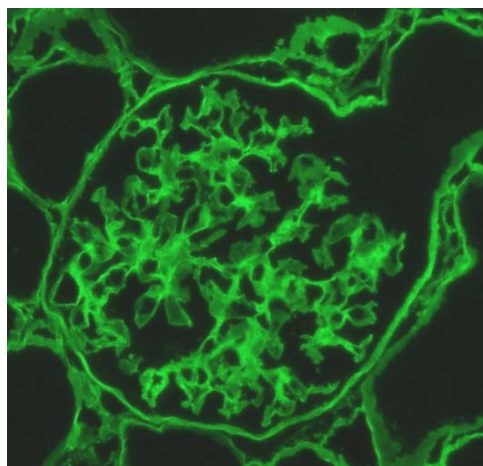
*Slight precipitate may form when thawed, microfuge at 10,000-15,000 RPM for 5 minutes immediately prior to use.*

To detect antigen of interest relative to the GBM, perform a standard indirect immunohistochemical method utilizing mouse, rabbit or goat antibody as primary. After several washes with PBS, incubate with a red chromagen (Cy3, TRITC, or Texas Red)-labeled second antibody. Wash several times then incubate with sheep serum (1:50) or sheep IgG (0.5 mg/ml) for 15 minutes. Incubate with diluted Probetex BioScout™ FITC-Sheep anti-Rat GBM antibody for 30-45 minutes. Wash and coverslip using fluorescence compatible mounting media with or without DAPI for nuclear staining. *Optimal working dilutions and procedures must be determined by end-user.*

**Other Relevant Probetex Products:**

PTX-000S: Pre-immune sheep serum

PTX-000IgG: Pre-immune sheep IgG (immunoglobulin fraction).



**Figure 1. A.** Linear immunofluorescence localization glomerular basement membrane and surrounding tubular basement in rat kidney stained with BioScout™ FITC-Sheep anti GBM. **B.** Dual localization of podocytes (vimentin staining, red) in the same section.

**For research use only; not for diagnostic use or consumption**